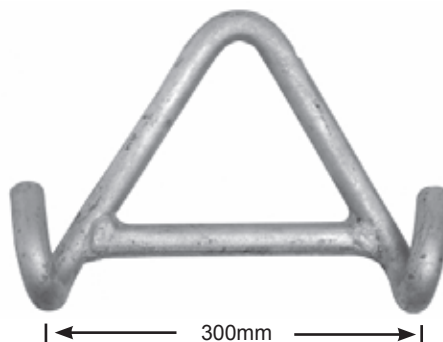


Suspension clamps and termination clamps for ABC mains and sub-mains.



SC495



PSY/H

SC SERIES SUSPENSION CLAMPS

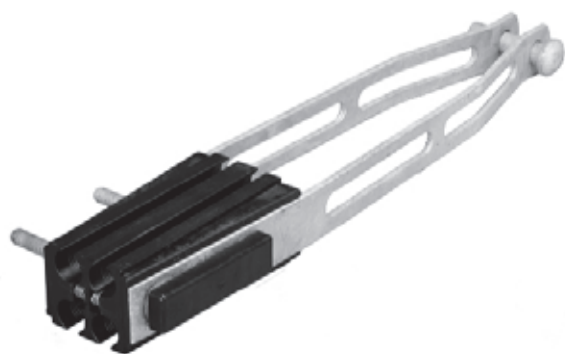
APPLICATION

Suspension of LVABC from 25mm² to 150mm²

FEATURES

- + Suitable for angles up to 30°
- + 30° to 60° use PSY/H bracket
- + Hinged aluminium alloy with body with stainless steel fasteners
- + Reinforced hanging eye to stop wear through vibration
- + Large angle yokes available

Product Number	Dia. of circumscribing circle over laid-up cable cores (mm)	Cable Size (mm ²)			
		2 Core	3 Core	4 Core	Pack Size
SC435	22 to 27	50	35, 50	25, 35	20
SC450	27 to 30			50	20
SC470	31 to 33	95		70	20
SC495	37 to 40			95	20
SC4150	43 to 47			150	20



PA122A



PA2535

PA SERIES TERMINATION CLAMPS

APPLICATION

Termination of LVABC 2 x 25mm² to 4 x 150mm²

FEATURES

- + Bolted full tension clamp
- + Stainless steel fasteners available as an option
- + Meets requirements of AS3560
- + Removable clevis pin

APPLICATION NOTE

Use fillers if only 2 cores are utilised.

Product Number	Cable Size (mm ²)	Maximum Failing Load (mm ²)	Rated Everyday Tension (kN)	Pack Size
PA2535	2 x 25 and 4 x 25 to 35			25
PA10/I	2 x 25 to 50 and 4 x 25 to 50	37	6	6
PA10/IS*	2 x 25 to 50 and 4 x 25 to 50	37	6	6
PA11/I	2 x 50 to 95 and 4 x 50 to 95	43	6	6
PA11/IS*	2 x 50 to 95 and 4 x 50 to 95	43	6	6
PA11/ISR*	2 x 50 to 95 and 4 x 50 to 95	43	6	6
PA11/ISRER*	2 x 50 to 95 and 4 x 50 to 95	43	6	6
PA122A	4 x 95 to 4 x 150	72		6

* Stainless steel fasteners